

淺談長期社會生態研究的資料管理與保存

Thoughts on Long-Term Socio-Ecological Research (LTSER) Data Management and Preservation

生態資訊微型研討會
Ecological Informatics Mini-Symposium

2023-06-11

莊庭瑞 Tyng-Ruey Chuang
中央研究院 Academia Sinica, Taiwan

和黃寶霈以及研究資料寄存所團隊
with Pao-Pei Huang and the depositar team



長期社會生態研究的特性

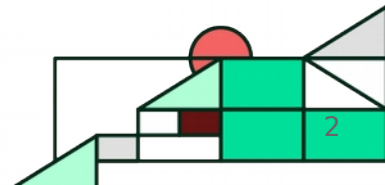
Characteristics of LTSER

生態學研究特性
Ecological
Research

Long (研究需長期時間)
Deep (各研究站進行細緻深入研究)
Broad (研究站點分佈範圍廣泛)

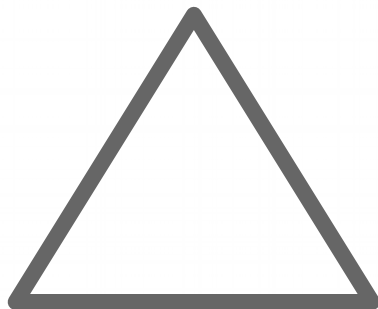


- 長期現地研究 (Long-term field research)
- 跨領域 (Interdisciplinarity)
● 聚焦問題 (Problem-focused)
● 整合利益關係者 (Stakeholder-integrating)
- 資料的彙集分享 (Pooling and Sharing Data)



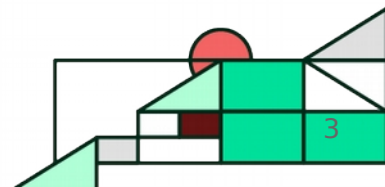
長期社會生態研究如何可以成功? Success Criteria Crucial for LTSER?

持續的資助經費
(Continuous Funding)



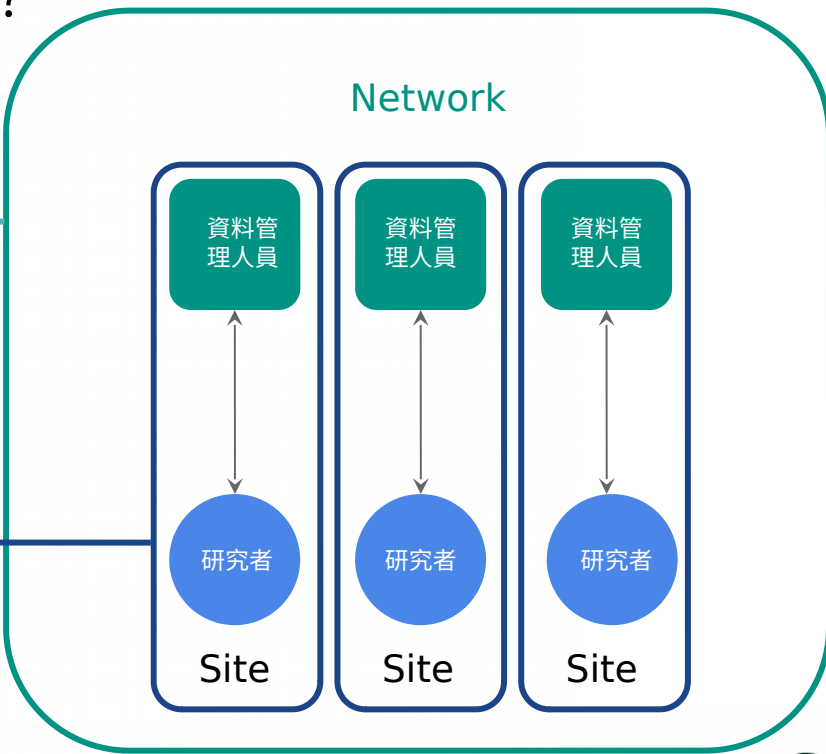
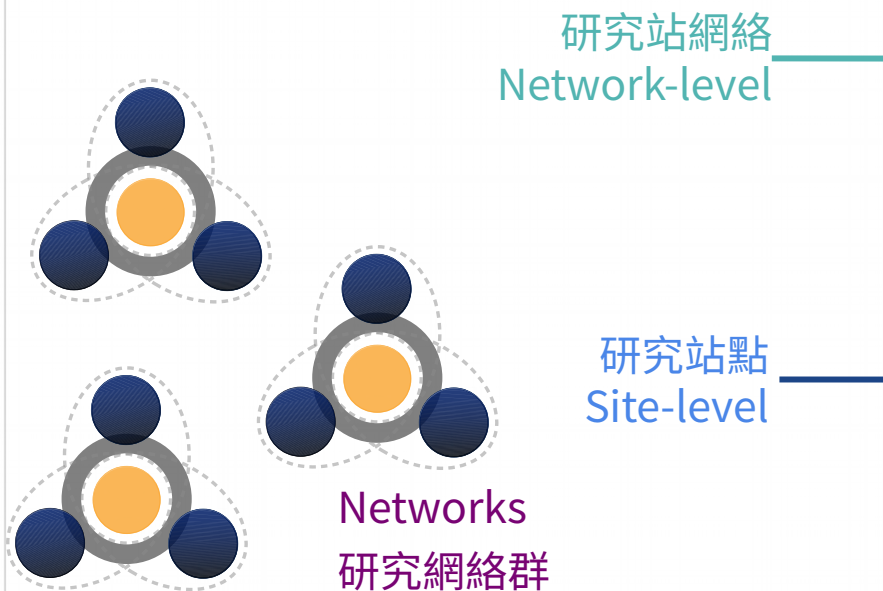
彈性且堅實的網絡
(A Loose, yet Stable
Network)

可用與能近用的資料與資訊
(Availability of and Access to Data and Information)



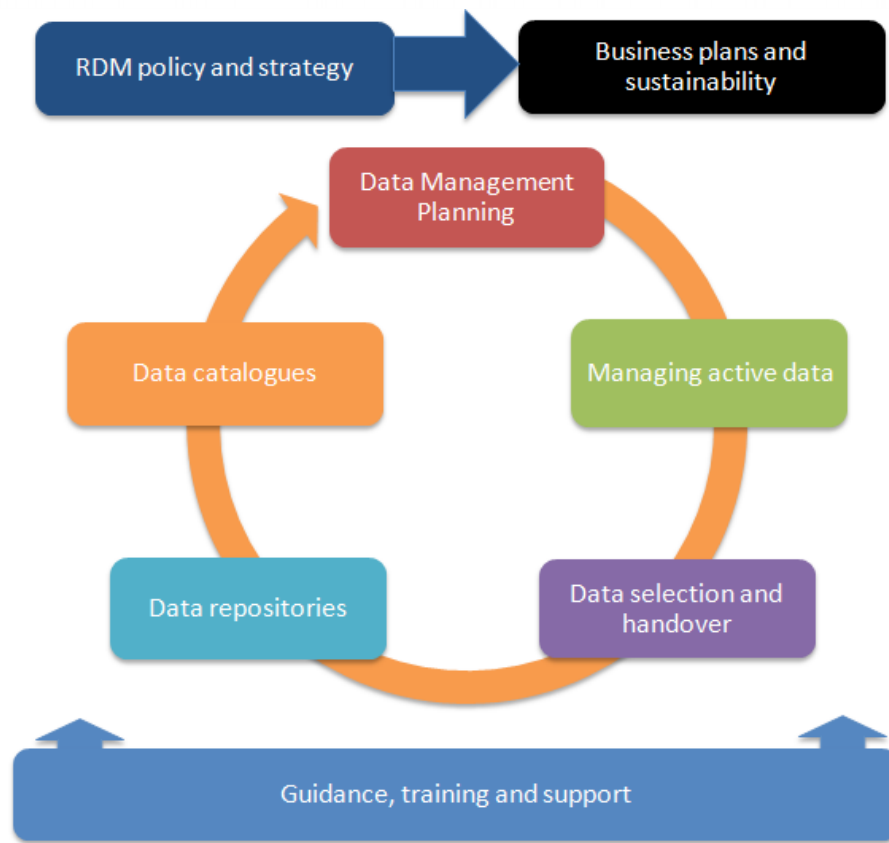
長期（社會）生態研究資料的管理可以如何進行？ LT(S)ER Data Management Planning?

以研究站點與研究站網絡二個階層進行管理



站點內 / 間之階層概念圖

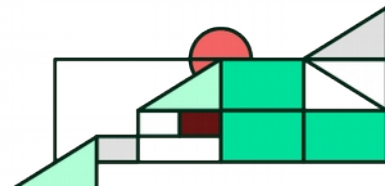
改自黃寶霈準備的投影片 (Karasti et al., 2006)



Source: www.dcc.ac.uk/resources/how-guides/how-develop-rdm-services

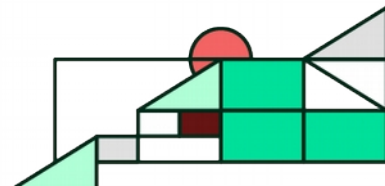
長期社會生態研究的資料張力 LTSER Data Tension

- Problem-focused research and/or baseline data collection?
聚焦問題的研究 或 \ 且 基礎資料的蒐集?
- Harmonizing diverse metadata practices and standards
需協調多樣的後設資料實務與標準
- What is the baseline spatio-temporal coverage and resolution?
基礎資料的時空範圍與尺度?
- Comparable studies across places, regions, and continents?
可跨越地點、區域、大洲的比較研究?
- Retrospective, continuous, and iterative data collection and revision
回顧性、連續性、迭代性的資料蒐集與校訂
- Communicating to multiple stakeholders and actors via data
以資料和諸多利害關係人與行動者溝通



長期社會生態研究的資料策略？ LTSER Data Strategy?

- Establish data coordination teams
建立資料協調小組
- Invest in long-term data infrastructure and data stewardship
投注資源於長期資料基礎設施與資料管理人員
- Work on baseline data curation for problem-focused research
聚焦於問題研究的基礎資料蒐集與展演
- Document and share data provenance, workflow, tools, etc.
紀錄並共享關於資料的溯源資訊、工作流程、處理工具等
- (Periodically) Publish data-rich project showcases and data reports
(定期) 出版資料豐富的專案展示與資料報告
- Have a Plan B for project succession and sun-setting
經費來源總是不穩定：專案工作如何接續和結束？



https://data.depositar.io/dataset/se_rdm_guides

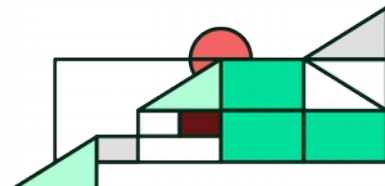
資料管理方案的核心需求 CORE REQUIREMENTS FOR DATA MANAGEMENT PLANS

可信賴的儲存庫的選用準則 CRITERIA FOR THE SELECTION OF TRUSTWORTHY REPOSITORIES

譯註：

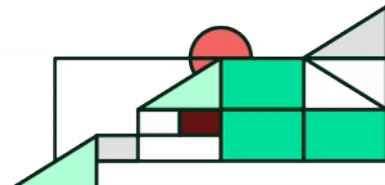
資料管理方案 ↔ Data Management Plans (DMPs)
研究資料儲存庫 ↔ Research Data Repositories

提案 ↔ Proposal
專案 ↔ Project ↔ 計畫 (項目)
方案 ↔ Plan



References 參考資料

- Gingrich, S. et al. (2016). Long-Term Socio-Ecological Research in Practice: Lessons from Inter- and Transdisciplinary Research in the Austrian Eisenwurzen. *Sustainability*, 8(8), 743. <https://doi.org/10.3390/su8080743>
- Kaplan, N. E., Baker, K. S., & Karasti, H. (2021). Long live the data! Embedded data management at a long-term ecological research site. *Ecosphere*, 12(5). <https://doi.org/10.1002/ecs2.3493>
- Karasti, H., Baker, K. S., & Halkola, E. (2006). Enriching the Notion of Data Curation in E-Science: Data Managing and Information Infrastructuring in the Long Term Ecological Research (LTER) Network. *Computer Supported Cooperative Work (CSCW)*, 15(4), 321–358. <https://doi.org/10.1007/s10606-006-9023-2>
- Mauz, I. et al. (2012). How scientific visions matter: Insights from three long-term socio-ecological research (LTSER) platforms under construction in Europe. *Environmental Science & Policy*, 19–20, 90–99. <https://doi.org/10.1016/j.envsci.2012.02.005>
- Mirtl, M. et al. (2013). Development of LTSER Platforms in LTER-Europe: Challenges and Experiences in Implementing Place-Based Long-Term Socio-ecological Research in Selected Regions. In S. J. Singh et al. (Eds.), *Long Term Socio-Ecological Research* (pp. 409–442). https://doi.org/10.1007/978-94-007-1177-8_17
- 黃寶霽 (2022)。〈長期社會生態系統研究的資料管理原則〉。
<https://rdm.depositar.io/resources/20221007-LTSER-data-managment-principles>
- 黃寶霽 (2023)。〈有生態資料又有問卷訪談，該如何管理研究資料？ CIRES x 研究資料寄存所交流報導〉。
<https://rdm.depositar.io/showcases/20230427-CIRES-depositar-communication>



@_depositar

謝謝! Thank You!



<https://data.depositar.io/> The *depositar*
<https://lab.depositar.io/> The *depositar lab*

data.contact@depositar.io

The *depositar* is a collaboration at the Institute of Information Science, the Research Center for Information Technology Innovation, and the Research Center for Humanities and Social Sciences (GIS Center) in Academia Sinica, Taiwan. The project has been supported, in part, by grants from the National Science and Technology Council of Taiwan.
The *depositar* project team: T-R Chuang, M-S Ho, C-J Lee & C-H Ally Wang.

「研究資料寄存所」是中央研究院資訊科學研究所、資訊科技創新研究中心、人文社會科學研究中心（地理資訊科學研究專題中心）的協作專案，部份經費來自國家科學及技術委員會的專題研究計畫。
研究資料寄存所計畫成員：莊庭瑞、何明誼、李承鑫、王家薰。





A Persistent Identifier Practice For A Research Data Repository



The 18th International Conference on Open Repositories (OR2023)
June 13, 2023

Cheng-Jen Lee, Tyng-Ruey Chuang
Institute of Information Science, Academia Sinica, Taiwan

